



MONTHLY MEMBERSHIP PROGRESS REPORT

District 413

Results as of: 5/31/2015

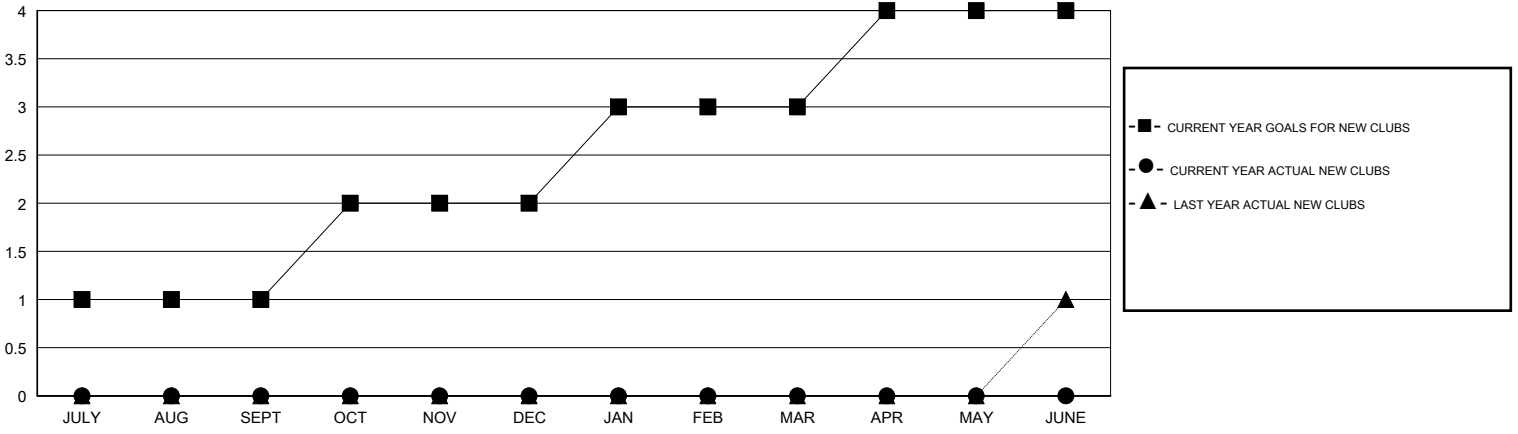
GMT: Amarpreet Sembhi

LOCATION ZAMBIA

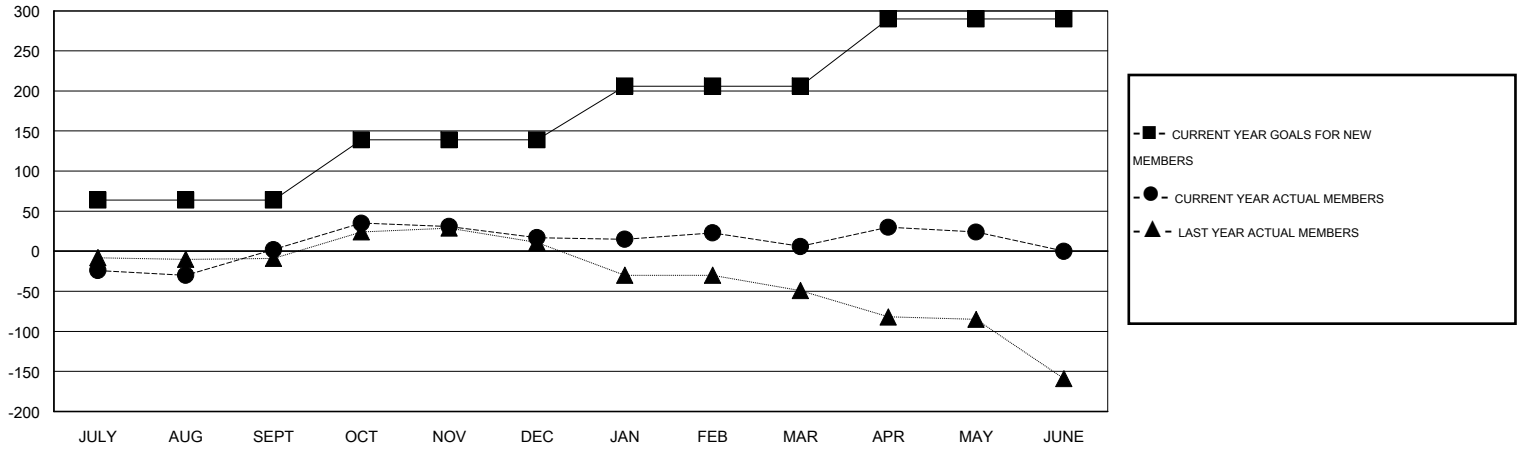
GMT CA 6-Af

Clubs					Members				
RESULTS FOR 2014-2015					RESULTS FOR 2014-2015				
QUARTER	NEW CLUB GOAL	NEW CLUBS	DROPPED CLUBS	NET GAIN/LOSS	QUARTER	NEW MEMBER GOAL	CHARTER AND NEW MEMBERS ADDED	DROPPED MEMBERS	NET GAIN/LOSS
JULY/AUG/SEPT	1	0	1	-1	JULY/AUG/SEPT	64	47	45	2
OCT/NOV/DEC	1	0	0	0	OCT/NOV/DEC	75	53	38	15
JAN/FEB/MAR	1	0	1	-1	JAN/FEB/MAR	67	26	37	-11
APR/MAY/JUNE	1	0	0	0	APR/MAY/JUNE	84	52	34	18

GOALS AND ACTUAL NEW CLUBS CUMULATIVE



GOALS AND ACTUAL MEMBERS CUMULATIVE



DROPPED CLUBS: 2	41 CLUBS OF 55 ADDED 1 OR MORE NEW MEMBERS	<u>GENDER DISTRIBUTION</u>	
		MALE	779 (63.33%)
<u>DROPPED MEMBERS</u>	CLICK HERE FOR HEALTH ASSESSMENT DATA	FEMALE	451 (36.67%)
DECEASED		7	FAMILY UNIT MEMBERS
CLUB CANCELLED	29	HEAD OF HOUSEHOLD	8
OTHER	118	NON-HEAD OF HOUSEHOLD	8
TOTAL	154		